

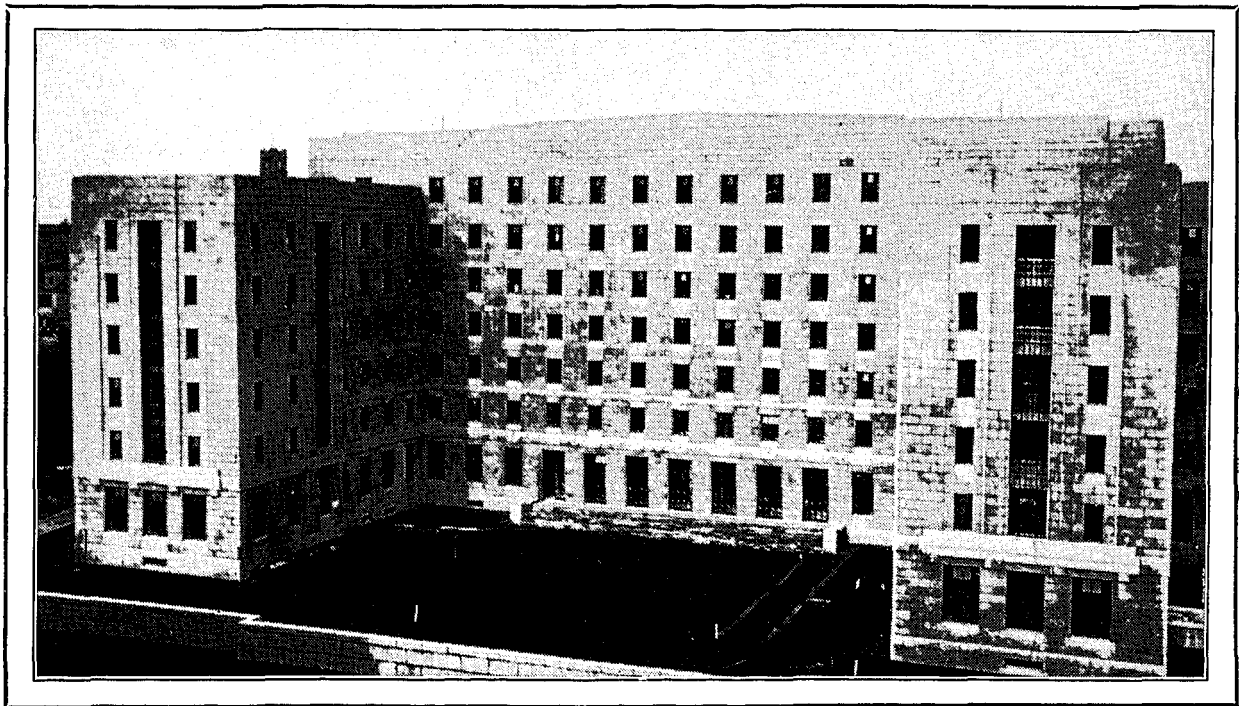
500 nurses on its staff. In the maternity block are 132 beds and the nurses trained and in training there number 136.

#### The Medical and Surgical Wards.

The medical and surgical wards show comparatively little alteration upon what they were some 30 years ago. They were always spacious and well supplied with window space, and the yellow walls have replaced a more sombre green that, in the old days, was considered "restful" and more harmonious than any other colour. On the surgical side the theatres are full of interest with all their wonderful modern appliances of every kind; inventions and adaptations are these, undreamt of until within the last ten years or less. But to see the ideal of what a modern theatre can be one must visit the neurological department: here surely there is nothing left to be desired for even the most exacting of those occupied with the

with anatomy and physiology and hygiene are most comprehensive. How easy and familiar must become certain aspects of the study of hygiene through such models, as that showing for instance a complete drainage scheme, in comparison with the system of theory joined to memory whereby we used to prepare for the different established examinations in hygiene in the past. One model showing the complete anatomy of the head and face (enlarged) deserves special notice because of its perfection down to the smallest muscles. We were shown the very interesting method used of recording, by the use of a chart, the different lectures which the student nurses had attended. The large classroom is excellently adapted to its purpose as are also the smaller apartments used for practical work.

The sections set aside for massage and X-ray work are large and very fully equipped, but space forbids us to say more of these and other special departments of the



THE FLORENCE NIGHTINGALE NURSES' HOME, SOUTH ELEVATION,  
THE ROYAL INFIRMARY, EDINBURGH.

surgery of the brain. The light from a large, adjustable, reflecting lamp placed high in the wall is directed on to a ceiling of beaten, stainless steel; the result is a perfect type of light for the kind of work that is undertaken in this particular theatre. From the galleries the students can watch the work of the surgeon; owing to the type of glass that fronts the gallery they see clearly all that is done in the theatre, but they are invisible to those in the theatre so that there is no risk of any movement proving a distraction to anyone there. Provision is made by means of a loud speaker that the remarks of the surgeon, as he proceeds with the operation, are clearly audible to the students, but no sound in the gallery can be heard while the operation is in progress. In its completeness, and in the ingenuity developed in every detail, nothing could be more magnificently adapted to modern surgery than this theatre which represents developments which no doubt will be followed by many hospitals in the future.

#### The Sister Tutor's Department.

The Sister Tutor's department is like an exhibition in miniature, for the collection of models, both in connection

hospital. As we walked through the grounds it was interesting to hear of the vicissitudes in the life story of the little red "isolation block" we knew of old; it became later the bio-chemical laboratory and now it is the nurses' classroom.

#### The Dietetic Out-Patient Department.

We cannot close this article without a reference to the Dietetic Out-Patient Department. Opened in 1925, it has made tremendous progress both as a centre for educational work and as a means of developing the dietetic research and treatment within the hospital. Moreover, its clinics prove to be of increasing value to people who come in, from the town and its surroundings, to take advantage of the advice and information which is forthcoming there. But it is not only such purposes that this department serves. It co-ordinates a great deal of educational work, done in Edinburgh, into which a study of dietetics must enter; girls going through a University curriculum and students of domestic science, for instance, come here for a considerable amount of practical teaching and experience. This extends to some small degree, into the activities of the

[previous page](#)

[next page](#)